

SPECIFICATIONS

System Parameters	
Bucket Capacity Range (m ³)	1.8
Rated Load Capacity (kg)	3000
Operating Weight of Machine	10100
Maximum Traction Force (kN)	97±3
Maximum Digging Force (kN)	95±3
Overall Dimensions of the Complete Machine (L X W X H) (mm)	7450x2500x3180
Unloading Height (mm)	2820 - 4510
Unloading Distance (mm)	1000
Wheelbase (mm)	2850
Track Width (mm)	1850
Body Swing Angle (°)	±35
Maximum Climbing Capacity (°)	26

Travel Speed (km/h)	1	2
Forward	7	12
Reverse	8.5	

Engine	
Version	WP6G125E22
Rated Power (kW/rpm)	92/2200
Starting Voltage (V)	24
Emission Standard	GB20891-2014(II)

Transmission System	
Hydraulic Torque Converter	Single-stage, Single-phase, Three-element
Transmission Type	Fixed-shaft power shift
Transmission Gears	2 Forward, 1 Reverse
Main Drive	Spiral bevel Gear Single-stage Reduction
Wheel Reduction Type	Planetary Gear Reduction
Tires	17.5 - 25

Braking System	
Service Brake	Single Circuit Caliper, Dry Brake
Parking Brake	Flexible Shaft Controlled Caliper Brake
Brake Air Pressure (Mpa)	0.70 - 0.78

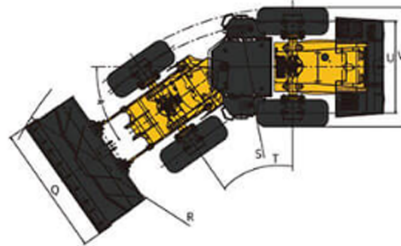
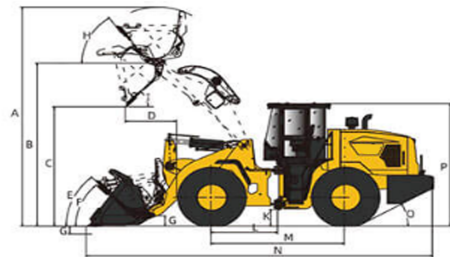
Steering Hydraulic System	
Type	Full Hydraulic Load Sensing Steering System
Steering Pump	Gear Pump

Steering Hydraulic System	
Type	Full Hydraulic Load Sensing Steering System
Steering Pump	Gear Pump
Steering Angle	±35°

Electrical System	
System Voltage (V)	24
Battery Capacity (Ah)	2-105
Lighting Voltage (V)	24

Various Oil Capacities	
Engine Oil (L)	12 (CI-4)
Transmission Oil	36
Front Axle/Rear Axle Oil	18/18

Machine Dimensions	Unit	Data	High Dump
(A) Overall Height - Bucket Raised	mm	4735	5040
(B) Bucket Pin Height at Max. Lift	mm	3725	4030
(C) Dump Clearance at Max. Lift (45°)	mm	2830	3240
(D) Reach at Max. Lift 45° Dump	mm	1070	1010
(E) Rack Back Angle at Carry	°	48.2	50.7
(F) Rack Back Angle at Ground	°	40.7	45
(G) Digging Depth	mm	30-40	30-40
(H) Rack Back Angle at Max. Lift	°	54.2	52.2
(I) Dump Angle at Max. Lift	°	48.6	45
(J) Carry Height	mm	400	400
(K) Ground Clearance	mm	355	355
(L) Center Line of Front Axle to Hitch	mm	1425	1425
(M) Wheel Base	mm	2850	2850
(N) Overall Length	mm	7200	7450
(O) Departure Angle	°	26	26
(P) Height to Top of Cab	mm	3180	3180
(Q) Overall Width over Bucket	mm	2500	2500
(R) Min. Turning Radius over Bucket	mm	6250	6250
(S) Min. Turning Radius over Tires	mm	5695	5695
(T) Steering Angle - Left/Right	°	35	35
(U) Width at Tread Center	mm	1850	1850
(V) Overall Width over Tires	mm	2320	2320



RHINO RWL833H

OPERATING WEIGHT
10100 kg 22266.68 lb

BUCKET CAPACITY
1.8 m³ 2.35 yd³

LOAD MEIZTER



WHEEL LOADER

RHINO CONSTRUCTION MACHINERY

Walk - Around

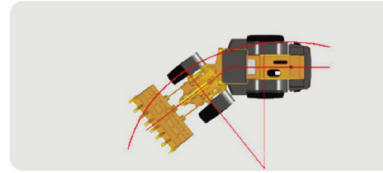
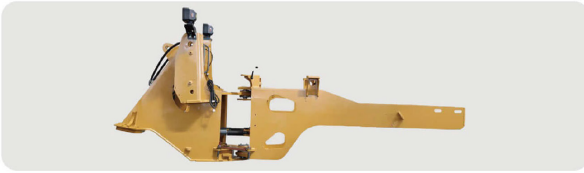
The All-New RWL833H Wheel Loader

The RWL833H wheel loader is a new generation 3-ton class wheel loader independently developed by RHINO to meet the national Stage II emission standards. It is suitable for shoveling, transporting bulk materials, earthwork construction, and other applications.



Excellent Structure, Easy Maintenance and More Durable

- High unloading arm (unloading height of 2930/3250mm, high environmental adaptability) standard equipped.
- The main hinge plates of the frame are widely spaced to resist loads from different directions, effectively decompose stress, and increase the maintenance space.
- The wheelbase is centered, with low walking resistance and flexible transportation in environmental operations.



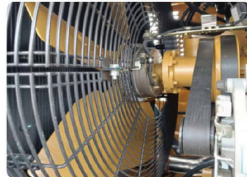
Reinforced T&A, High Reliability and High Efficiency

- Self-made hydraulic shift fixed-shaft transmission with high transmission efficiency, reliable operation.
- Self-made reinforced drive axle with high reliability and strong load-bearing adaptability.
- Scientifically matched with a powerful engine and has low maintenance costs.
- Reinforced drive shaft making transmission more reliable.



Lower Energy Consumption, High Efficiency and Excellent Control

- Equipped with Weichai tier 2 engine, with high power efficiency and low energy consumption.
- The new high-performance heat dissipation system has an optimized design, high heat dissipation efficiency, and the thermal balance performance of the entire machine is greatly improved.



New Appearance, High Comfort and Easy Maintenance

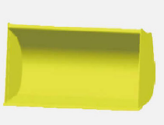
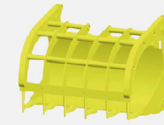
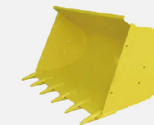


- Beautiful and elegant new appearance cab, spacious space and wide operating field of view; new sensory cockpit design, good driving comfort.
- Equipped with a digital LCD display multi-function instrument, rich information display ensures better control of working status. The one-piece metal hood is high in strength and easy to repair; the large-opening side door of the hood provides spacious space and makes maintenance more convenient.



Various Attachment Options

Attachment Category



Attachment Category	High Unloading Bucket	Wood Fork	Enlarged Bucket	Pitchfork
Bucket Type	High Unloading Bucket	Wood Fork	Enlarged Bucket	Pitchfork
Bucket Capacity (m ³)	1.8			2.5
Unloading Height (mm)	2930/3250±30	3150	3085	3160±30
Unloading Distance (mm)	1000±30	1390	1405	1100±30
Attachment Dimensions (mm)	1251×2430×1058	1410×1810×1480	1633×2620×1532	1200×2900×1154
Minimum Holding DiameterΦ		Φ420		
Maximum Opening Height (mm)		1570		